



soft play

www.softplay.com
800.782.7529

FAMILY
FOCUSED
ACTIVE PLAY
SOLUTIONS

introducing the natural element collection

introducing the natural element collection

For over 30 years, Soft Play® has been known as the leader in contained play. Committed to moving FORWARD, Soft Play introduces the The Natural Element Collection to compliment today's modern and progressive interior design trends and help you meet the ever-evolving needs of your customers.

play value. The Natural Element Collection is designed to encourage creative and free play, opening the imagination to endless ways to play on the equipment. With no traditional directed start and finish, children are able to play throughout the structure and various components in their own unscripted adventure.

modern design. The wooden structural columns compliment today's interior design trends. The warmth of natural wood provides design aesthetics not traditionally seen on contained playground equipment. As a renewable resource, wooden structures also carry a go-green initiative.

smaller footprint. Updated grid size proportions elevate play to the maximum. A reduction in deck sizes maintains the high level play pattern while reducing the overall footprint of the play structure. The smaller footprint means a better optimization of the space used within the store.

With this unit design, we once again reimagined the contained playground!



new play events



The Natural Element Collection introduces new play events that are tested and approved by kids! All elements of this playground come to life with an orchestration of energetic motion. The opportunities for climbing, twisting, and traversing the play scape are unlimited.

- 1

Spider
The Spider climb challenges physical and cognitive skills needed to navigate through a maze of fun.
- 2

Ripple
This uniquely shaped deck adds dynamic physical and visual amusement to the playground aesthetic.
- 3

Cooling Tower
This rope climb promotes upper-body strength, while encouraging children to discover new and exciting ways to ascend through their space!
- 4

Eclipse
Cantilevered, curved body of the Eclipse provides a compact challenge-transition between two levels. An element of daring while suspended high in the air.
- 5

Scoop
This slithering, twisting climber promotes upper-body strength, core fitness and giggles. Playful textures, portholes and configurations provide unique play patterns and design.
- 6

Zero G
Suspending rings sway back and forth as kids scramble to the other side with playful finesse.



“ Best product in contained play that I’ve seen for all developmental aspects for kids today. The new equipment challenges both gross motor and cognitive skills as they not only move and use different muscle groups but are challenged to make decisions on how they approach the next event. ”

Teri Hendy - President
Site Masters, Inc.





domestic play systems



0700

unit type: nature frame

play capacity:

70 Children

playground footprint:

17' x 18'8" (5.2m x 5.7m)

minimum site dimension:

21' x 20' (6.04m x 6.01m)

play equipment height:

15'3" (4.65m)

recommended surfacing:

186 sqft (17.28 sqm)

featured play events:

cooling tower, pogo power,
scoops, zero G, slide, sit-n-
spin, ripples, spider climb,
eclipse, toddler slide, sprouts

optional:

pogo power meter and play
panels



2016 show



0701

unit type: nature frame

play capacity:

40 Children

playground footprint:

16'2" x 14'6" (4.9m x 4.4m)

minimum site dimension:

19' x 17' (5.8m x 5.2m)

play equipment height:

13' (4m)

recommended surfacing:

95.75 sq.ft (8.9 sq.m)

featured play events:

cooling tower, scoops, slide,
sit-n-spin, ripples, spider climb,
sprouts

optional:

play panels



0702

unit type: nature frame

play capacity:

20 Children

playground footprint:

13'9" x 10'6" (4.2m x 3.2m)

minimum site dimension:

18' x 14' (5.5m x 4.3m)

play equipment height:

10' (3m)

recommended surfacing:

43.25 sq.ft (4 sq.m)

featured play events:

cooling tower, ripples, spider
climb, sprouts

optional:

pogo power meter and play
panels





McDonald's
Broadview, Illinois



Model options subject to change without notice

0524

unit type: 2" pipe & pad

play capacity:

47 Children

playground footprint:

14'4" x 14'4" (4.36m x 4.36m)

minimum site dimension:

24' x 20' (7.31m x 6.09m)

play equipment height:

15'6" (4.72m)

recommended surfacing:

160 sq.ft (14.3 sq.m)

featured play events:

pogo power, sprouts,
EZ access climb, hover
rings, wobble hopper,
skywheels, internal exit
slide, observation platform,
kid conveyor



Also available in DuraFrame low
maintenance system. Request
model number 0522



0539

unit type: 2" pipe & pad

play capacity:

63 Children

playground footprint:

16'4" x 10'4" (4.97m x 3.15m)

minimum site dimension:

20' x 20' (6.09m x 6.09m)

play equipment height:

15'10" (4.82m)

recommended surfacing:

139 sq.ft (12.9 sq.m)

optional items:

drum & guitar musical play panel

Also available in DuraFrame low maintenance system.



"The Play Space have proven to be a great replacement of my older play place. The unit is family friendly. Parents state they feel better about being able to see their children in the unit. Cleaning and sanitation is much easier for my crew to do. I plan on having 5 more stores done in 2016. "

Dennis Graspoiner - President
Graspoiner Management, Inc.

2014 show



Model options subject to change without notice



Model options subject to change without notice

0525

unit type: 2" pipe & pad

play capacity:

49 Children

playground footprint:

12'4" x 16'6" (3.76m x 5.12m)

minimum site dimension:

13'6" x 19' (4.11m x 5.79m)

play equipment height:

14'5" (4.41m)

recommended surfacing:

48 sq.ft (4.4 sq.m)

featured play events:

EZ access climb, 2nd level integrated slide, sky-wheels, kid conveyor, criss cross obstacle, sit-n-spin, toddler nest, play panel, sneaker keeper

Also available in duraframe low maintenance system.



0538

unit type: 2" pipe & pad

play capacity:

17 Children

playground footprint:

12'4" x 12'4" (3.75m x 3.15m)

minimum site dimension:

16' x 18' (4.87m x 5.48m)

play equipment height:

10'3" (3.12m)

recommended surfacing:

141 sq.ft (13 sq.m)

featured play events:

EZ access climb, wobble hopper, sky wheel, 4' curved slide, integrated toddler area that includes sprouts spin cup, loops and piano panel



Model options subject to change without notice

"We recently completed a rebuild in Huber Heights, OH. The PlayPlace has always been very popular at this location but now that it has been replaced with a new Active Play unit it is more popular than ever. Competition is greater now than ever before. The Soft Play Active Play unit helps differentiate us from everyone else."

Benny Scott - President
Scott M & A Corporation
MCD Location

0529

unit type: 2" pipe & pad

play capacity:

24 Children

playground footprint:

16'4" x 12'4" (4.97m x 3.15m)

minimum site dimension:

20' x 18' (6.09m x 5.48m)

play equipment height:

9'5" (2.87m)

recommended surfacing:

130 sq.ft (9.6 sq.m)

optional items:

piano, drum & guitar
musical play panel

featured play events:

EZ access climb, hover ring, skywheel, 4' curved slide, integrated toddler area that includes sit-n-spin, jr. conveyor and math beads play panel



Model options subject to change without notice



Also available in DuraFrame low maintenance system.





international play systems



Model options subject to change without notice

0754

unit type: nature frame

play capacity:

70 Children

playground footprint:

16'3" x 10'2" (5m x 3.1m)

minimum site dimension:

20' x 14' (6.1m x 4.3m)

play equipment height:

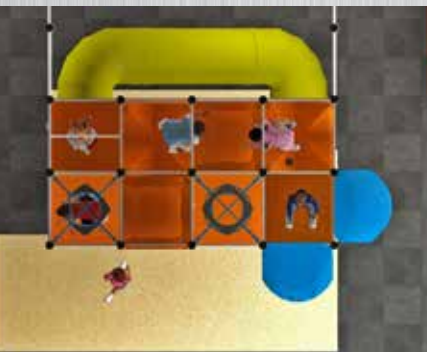
13' (4m)

recommended surfacing:

110 sqft (100 sqm)

feature play events:

cooling tower, scoops,
slide, sit-n-spin, ripples,
spider climb, sprouts



international play systems

soft play

0753

unit type: nature frame

play capacity:

20 Children

playground footprint:

10'6" x 7'2" (3.2m x 2.2m)

minimum site dimension:

12' x 12' (3.6m x 3.6m)

play equipment height:

8'9" (2.7m)

recommended surfacing:

36 sq.ft (3.34 sq.m)

featured play events:

cooling tower, scoops, slide,
ripples, spider climb



0751

unit type: nature frame

play capacity:

22 Children

playground footprint:

7'2" x 10'6" (2.2m x 3.2m)

minimum site dimension:

9' x 15' (2.7m x 4.6m)

play equipment height:

8'9" (2.7m)

recommended surfacing:

45 sq.ft (4.2 sq.m)

featured play events:

cooling tower, scoops,
ripples, spider climb

0752

unit type: nature frame

play capacity:

20 Children

playground footprint:

10'6" x 7'2" (3.2m x 2.2 m)

minimum site dimension:

12' x 12' (3.6m x 3.6m)

play equipment height:

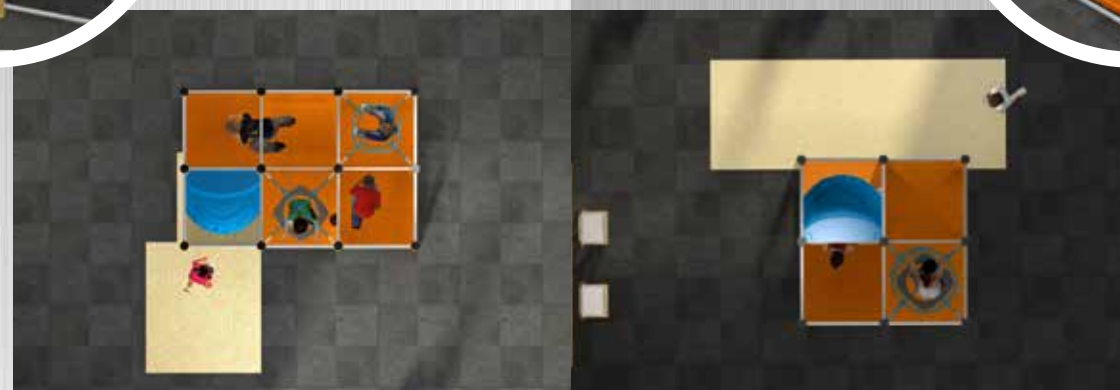
8'9" (2.7m)

recommended surfacing:

36 sq.ft (3.34 sq.m)

featured play events:

cooling tower, scoops,
ripples, spider climb



0750

unit type: nature frame

play capacity:

13 Children

playground footprint:

7'2" x 7'2" (2.2m x 2.2m)

minimum site dimension:

16' x 14' (4.9m x 4.3m)

play equipment height:

8'9" (2.7m)

recommended surfacing:

58 sq.ft (5.38 sq.m)

featured play events:

cooling tower, scoops,
ripples, spider climb

Keeping your PlayPlace in top shape is only a phone call away. Our factory-trained professionals are available to help you choose the parts and service you need. Repairs, maintenance and cleaning service are available upon request. In addition to the popular replacement parts shown below, Soft Play can provide almost any replacement part you may need. Give us a call and let us know how we can help!



SP20536
Toddler Rules Sign



SP20565
Spanish Toddler Rules sign



SP20535
Rules Sign



SP16816
Spanish Rules sign



SP11052
No Climbing Sign



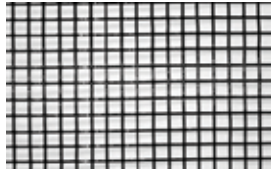
SP13738
Spanish No Climbing Sign



P16956
Tube Step



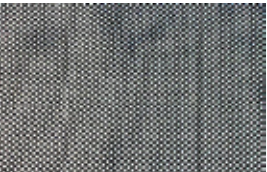
SP12611
21" Black Tie



F12635
Tuffnet barrier panel



SP18705
Tuffnet Clip & Screws



SP14408
NoClimb Netting



SP11277
34" Dome



SP13005
34" Flat Window



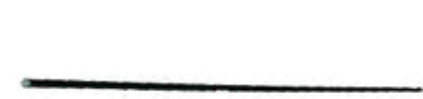
P14255
Step 18x10



SP18855
Tuffskin Post Pad, 8 colors



SP15232
In-line buckle ties, 8 colors



SP14038
Fiberglass Rod



P19052
Extrusion Pad



P17037
Junction box pad

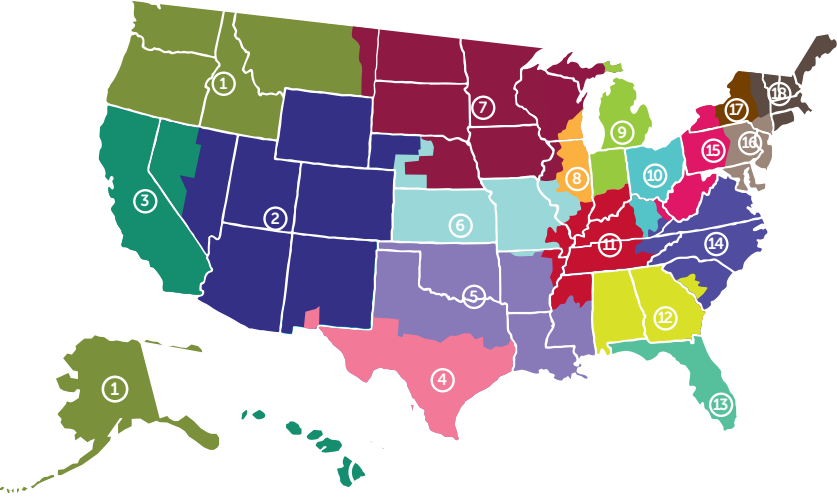
For Parts and Service Call:
1-800-782-2936

+1-704-875-6550 • sp-customerservice@softplay.com

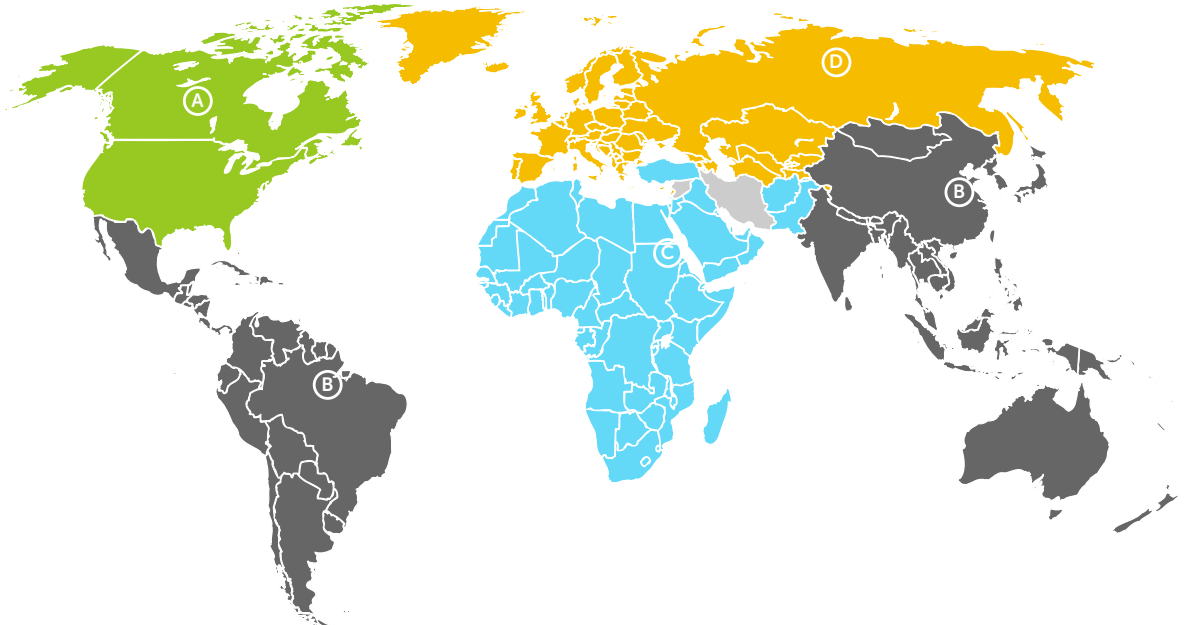
domestic representatives

corporate
contact

Jim Swintek
Sales Manager
1-704-948-3448
Email jims@softplay.com



international representatives



- Randy Moe**
(541) 580-2614
Email randy.moe@fcccurn.com
- Tom Carara**
(303) 840-7165
Email carara3@comcast.net
- David Oliver**
(310) 739-2070
Email Davidoliversoca@gmail.com
- Pamela Olson**
(281) 890-9711
Email softplaypam@aol.com
- James Jeter**
(903) 595-0060
Email jamjeter@aol.com
- Scott Upton**
(303) 757-1998
Email uptonsc03@msn.com
- Curtis Tiano**
(507) 664-0541
Email curtis.tiano@gmail.com
- Christopher Nikodem**
(630) 721-3009
Email cnikodem@gmail.com
- Brent Garrison**
(616) 450-9932
Email brentwgarrison@charter.net

- Bob Twiss**
(937) 335-3800
Email rct@bobtwiss.com
- Lee Lenox**
(615) 376-9586
Email LLenox@isi-america.com
- Ned O'Brien**
(678) 966-9141
Email N.OBRIEN@comcast.net
- Bootsie Lanpher**
(610) 247-4679
Email bootsielanpher@gmail.com
- Donnie Harrelson**
(704) 604-7600
Email donnie.harrelson@charter-house.com
- Paul McIntyre**
(215) 504-0400
Email paul.mcintyre@charter-house.com
- Jim Hines**
(631) 271-1963
Email jphines2@aol.com
- Brett Rutledge**
(508) 366-9626
Email brutledge@aol.com

- A Jim Swintek**
North America
Jim.swintek@softplay.com
T. 704-948-3448
F. 704-875-6561
- B Billy Joyce**
Latin America / Caribbean / Asia / Pacific
Billy.joyce@playpower.com
playpowerintl@aol.com
M. +1-704-340-1382
- D Colin Fuoco**
Europe
Colin.fuoco@playpower.com
M. +44 (0) 7747 848263
- C Said Mallouky**
Middle East / Africa
Said.mallouky@softplay.com
T. +1-704-464-4511
M. +212+664+869032



providing family fun destinations since 1984



**contact us
to get started**

United States

11515 Vanstory Dr. , Suite 100
Huntersville, NC 28078

Fax: (704) 875-6561



+1 (704) 875-6550

+1 (800) 782-7529

International

international@softplay.com



www.softplay.com

sales@softplay.com

